



GV

*“The Brand of
Breeder Respect and
Commercial Appeal”*

LIMOUSIN

Spring Sale

Saturday, February 15, 2014



LIMOUSIN

Spring Sale

SALE LOCATION

Anderson County Sales Co.
N. Hwy. 59 • Garnett, Kansas
Cafe Open
— owners —
Ron & Christy Ratliff
Home Phone 785-448-2603
Ron (cell) 785-448-8200

SALE DAY PHONE

785-448-3811

AUCTIONEER

Bruce Brooks • 580-276-5137

SPECIAL GUESTS

Joe Epperly - Assistant Executive Director
North American Limousin Foundation

Weston Geppert, Limousin World

Dean Summerbell
Heartland Limousin Association

Randy Corns, President
Kansas Limousin Breeders

Scott Manley, Ring Service
Bruce Bradley, Ring Service

SATURDAY

FEBRUARY 15, 2014

1:00 PM

Garnett, Kansas

SELLING

80 LOTS

60 All Polled Bulls

50 Purebred Bulls

10 Lim-Flex

20 Bred Young Cows



Limousin

Gene and Virginia Raymond
Arne and Stacy Hanson
20217 NW Hwy. 31
Garnett, Kansas 66032
785-448-3708 - Gene (Home)
785-448-8026 (Cell)
785-448-6142 - Arne (Home)
785-448-8027 - Arne (Cell)
785-448-4310 - Brandon Davis (Cell)
email: gvlimousin@eckson.net
www.gvlimousin.com



Limousin

Gene and Virginia Raymond
 Arne and Stacy Hanson
 20217 NW Hwy. 31
 Garnett, Kansas 66032
 785-448-3708 - Gene (Home)
 785-448-8026 (Cell)
 785-448-6142 - Arne (Home)
 785-448-8027 - Arne (Cell)
 email: gvlimousin@ecksor.net
 www.gvlimousin.com

40th Year Breeding Limousin

Your Full Service Limousin Supplier

Dear Fellow Cattlemen and Friends,

Welcome to the 2014 GV Limousin Spring Sale. On behalf of everyone at GV, we want to invite you to be with us on February 15th. This offering will feature many of the leading genetics in the Limousin breed.

The seedstock business goes beyond selling a quality product - equally important is the service that goes with it. Our success isn't just about hard work. It comes down to our focus on genetics, our passion for good cattle, and the way we treat our customers.

If you have any questions about the sale offering please give us a call. If you cannot be with us, contact us for someone to represent your interest. Hope to see you on February 15th.

Gene Raymond

Arne Hanson

Our customers are the most important part of our program.

The Information In This Catalog: All Birth Weights are actual, all Weaning Weights and Yearling Weights are adjusted to 205 and 365 days of age, respectively. EPDs are current as of Spring 2014.

Current Breed Average EPDs:

	CED	BW	WW	YW	MA	CETM	SC	STAY	DOC	CW	REA	YG	MARB	\$MTI
SIRES:	8.4	1.9	45.6	82.6	22.5	4.0	0.4	19.2	17.7	21.5	0.53	-0.09	-0.03	43.7
DAMS:	8.0	2.0	42.4	77.4	22.0	3.8	0.3	18.7	16.5	16.7	0.48	-0.10	-0.03	42.6

EPD and Performance Information

The EPDs in this catalog reflect the new base used to calculate EPDs for Limousin cattle. They now have the same look as Angus EPDs. For commercial producers this rescaling helps simplify the use of Limousin EPDs by making the set of ranking benchmarks similar for both breeds. While EPDs of the two breeds cannot be directly compared, if you know the benchmark within the Angus genetic evaluation, you also know the EPD benchmarks within the Limousin evaluation. Twice a year EPDs

are recalculated to include any new data that has been submitted to NALF. This is done to keep them up to date and improve accuracies. With this in mind, expect EPDs to change on the animals you purchase. The EPDs for the Lim-Flex calves reflect the combined EPDs of the Angus Assoc. and the current information in the Limousin EPD bank from the sires and dams of that breed. As this is a fairly new development, the accuracies will be low.

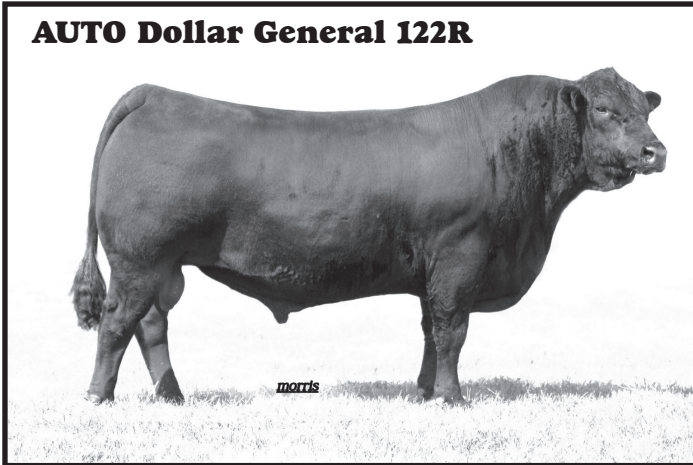


LIMOUSIN

Limousin & Lim-Flex for Limousin Breeders & Commercial Producers

TWO HERD BULLS WE USE HEAVILY A.I.

AUTO Dollar General 122R



GV X-Man 701X



AUTO Dollar General 122R

April 2005, Homo. Pld., Homo. Blk.

	CE	BW	WW	YW	MA	CM	SC	DC	CW	RE	YG	MS	\$MI
EPDs	15	0.7	64	112	45	14	0.7	18	42	0.38	0.16	0.22	56
Rank	10%	20%	4%	4%	1%	1%	20%	40%	10%		1%	1%	

Dollar General contributes strong maternal traits, high marbling, unbelievable fleshing ability, moderates frame size, and is a true curve-bender for performance, low birth weight (proven heifer bull) and breed-leading growth.

Semen Available.

GV X-Man 701X

Feb. 2010 - Black, Double Polled

	CE	BW	WW	YW	MA	CM	SC	DC	CW	RE	YG	MS	\$MI
EPDs	16	2.1	67	119	32	10	1.0	21	59	0.92	0.03	0.07	53
Rank	5%	50%	2%	1%	5%	5%	10%	40%	2%	4%		10%	2%

This young herd sire is the result of our efforts to balance all economically important traits in our breeding program. Look for his progeny in our sale. You won't want to miss them.

Semen Available.

“The Brand of Breeder Respect and Commercial Appeal”

5-S Cattle Company, Kansas

“We started buying GV bulls in 1990. We liked their calves consistency and quality. You could pick out every Limousin calf in the pasture. In 2014, we will have over 500 calves all sired by GV bulls.”

Pattison Brothers, Montana

“When we buy GV Limousin genetics, we’re buying the program - people & cattle. It’s a bonus. They are good disposition, easy fleshing, reliable producers, and handle our winters. Our kids’ 4-H steers are consistent carcass winners.”

Jarrillos Ranch, Southern Arizona

“I started buying GV bulls 7 years ago. The last 4 calf crops were all sired by GV bulls. I have several breeds and colors of cows. GV bulls are very docile, take all the ear off, make the calves a solid color - black or red - and are the heaviest calves I have ever sold. They have topped the market the last 4 years. These bulls adapt to our rocky, rough terrain and desert vegetation, and maintain themselves very well. Their longevity and fleshing ability is great! I have not had one bull go unsound in 7 years.”



Thank You

“We want to thank the Travis Vermillion Family for campaigning GV Red Man 417Z, 2 time Reserve Champion Limousin Bull at the Kansas State Fair and several other shows in the Midwest. Good Job!!

- **Balanced Focus** • **Fertility** • **Performance** • **Carcass**
- **Maternal** • **Disposition** • **Longevity**

PERFORMANCE EPDS:

CED stands for calving ease direct and is important when choosing sires to produce calves born easily. The higher the number the better.

BW EPDs: express the difference in birth weight on the progeny of the bulls being compared.

WW EPDs: express the difference in pounds at 205 days on the progeny of the bulls being compared.

YW EPDs: do the same as WW except it is the weight at 365 days.

MA EPDs: predict differences in weaning weights from daughter's calves due to genes inherited for milk.

CETM EPDs stand for Calving Ease Total Maternal and are important for choosing sires that produce replacement females that give birth to their first calf easily. The higher the number, the better.

SC EPDs: are expressed in centimeters of scrotal circumference, and compare the difference expected in sons of the animal. Scrotal EPDs are a good indicator of age of puberty of both the sons and daughters of the animal.

CARCASS EPDs:

CWT EPDs: express the difference in pounds of carcass weight.

REA EPDs: express the difference in square inches of rib eye area

YG EPDs: indicates the differences for yield grade and cutability

MS EPDs: express the difference in the amount of marbling or flecks of fat in the rib eye.

\$MTI: dollar value indexes are used to rank animals according to net genetic merit for profit from genetics for post-weaning growth and carcass performance.

This information should help you analyze and sort the bulls to fit your specific needs. We realize this is a lot of data to use, so please ask us if you need further assistance.

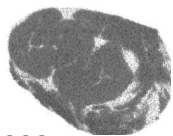
NALF 2012-2013 Purebred Born Calves Spring 2014 Genetic Evaluation

Percentile Group	Calving					Calving				Carcass weight	Ribeye Area	Yield Grade	Marbling Score	\$MTI
	Ease Direct	Birth Weight	Weaning Weight	Yearling Weight	Milking Ability	Ease Maternal	Scrotal Circum.	Stayability	Docility					
1	21	-3.1	67	114	35	13	1.2	28	39	54	0.94	-0.25	0.18	55.0
2	20	-2.5	64	111	33	12	1.1	28	37	51	0.89	-0.23	0.16	53.0
3	19	-2.2	62	109	32	12	1.1	27	36	49	0.87	-0.22	0.14	52.0
4	18	-1.9	61	107	32	11	1.0	27	36	47	0.85	-0.21	0.12	52.0
5	17	-1.7	60	106	31	11	1.0	26	35	46	0.83	-0.20	0.11	51.0
10	15	-1.0	57	101	29	9	0.9	25	33	41	0.77	-0.17	0.08	50.0
20	13	0.0	53	95	27	8	0.7	24	29	36	0.70	-0.14	0.05	48.0
30	11	0.7	51	91	25	6	0.6	22	27	33	0.65	-0.12	0.03	46.0
40	10	1.2	48	88	24	5	0.6	21	25	30	0.61	-0.10	0.01	46.0
50	9	1.7	46	84	23	5	0.5	20	22	27	0.57	-0.08	-0.01	45.0
60	8	2.1	44	81	21	4	0.4	19	20	24	0.52	-0.06	-0.03	44.0
70	7	2.5	42	77	20	3	0.3	18	17	20	0.47	-0.03	-0.04	43.0
80	6	3.0	39	73	19	2	0.2	16	14	16	0.41	0.00	-0.06	42.0
90	4	3.7	36	68	17	1	0.1	14	10	10	0.33	0.04	-0.09	40.0

NALF 2012-2013 Lim-Flex Born Calves Spring 2014 Genetic Evaluation

Percentile Group	Calving					Calving				Carcass weight	Ribeye Area	Yield Grade	Marbling Score	\$MTI
	Ease Direct	Birth Weight	Weaning Weight	Yearling Weight	Milking Ability	Ease Maternal	Scrotal Circum.	Stayability	Docility					
1	17	-4.2	69	123	40	9	1.1	26	32	64	0.58	-0.10	0.61	64.0
2	16	-3.6	66	120	38	9	1.0	24	30	60	0.51	-0.06	0.57	62.0
3	15	-3.1	65	118	37	8	0.9	24	29	57	0.48	-0.04	0.54	61.0
4	15	-2.8	64	116	36	8	0.9	23	28	56	0.44	-0.01	0.52	60.0
5	14	-2.6	63	115	36	7	0.9	23	27	54	0.42	0.01	0.50	60.0
10	13	-1.9	60	111	34	6	0.8	22	24	49	0.34	0.08	0.43	58.0
20	11	-1.0	56	105	32	5	0.6	19	20	43	0.24	0.14	0.35	55.0
30	10	-0.5	54	101	30	5	0.6	18	18	39	0.17	0.19	0.30	54.0
40	10	0.0	52	98	29	4	0.5	18	16	35	0.10	0.23	0.26	52.0
50	9	0.4	49	95	27	3	0.4	17	14	31	0.03	0.28	0.23	51.0
60	8	0.8	47	91	26	3	0.4	16	13	26	-0.04	0.32	0.19	50.0
70	8	1.2	45	88	25	2	0.3	15	11	21	-0.11	0.37	0.16	49.0
80	7	1.7	42	83	23	2	0.2	15	9	16	-0.20	0.43	0.12	47.0
90	6	2.4	39	77	21	1	0.1	13	7	8	-0.33	0.50	0.06	45.0

PRIME CUT ULTRASOUND



Trish Breuel
4489 Hwy K-68
Wellsville, KS 66092
LTB Ranch

Home: 785-883-4128
Cell: 785-229-5174

*Improving the quality
and genetics of your beef
through Real Time Ultrasound Imaging.*

*"These are the stoutest and best disposition
bulls I scan." - Trish Breuel*

Information Increases Predictability

- Performance Data EPD's
- Ultra-sound Data
- BVD & TRICH Tested
- Semen Tested
- Customer Satisfaction
Guaranteed

2-YEAR-OLD BULLS - LOTS 1 - 26

LOT 1 **GV UNBELIEVABULL 401Z**

GV	PUREBRED	DBL PLD/RED	EPDs % Rank
	100/87.3	BD: 2/9/12	CD: 12 30
	VIRG401Z	NPM-2017954	BW: 0.5 30
	ROMN JUSTICE		WW: 42
Sire	ROMN UNBELIEVABULL 141U		YW: 84
	ROMN SARAH 42S		MA: 22
	GV Lodestar 409R		CM: 6 30
Dam	GV MISS LODESTAR 016X		SC: 0.7 20
	GV Miss Jag 215M		DC: 15
			CW: 18
			RE: 0.51
			YG: -0.09
			MS: -0.02
			\$MI: 43
BW: 82 ADJ WW: 573 ADJ YW: 1016			

LOT 2 **GV UNBELIEVABULL 403Z**

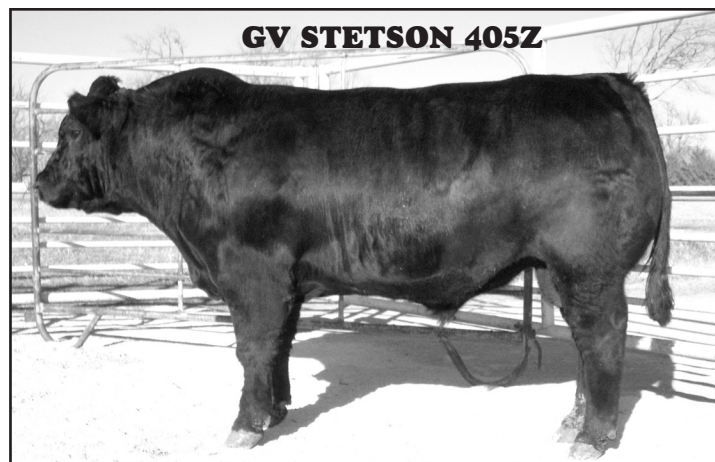
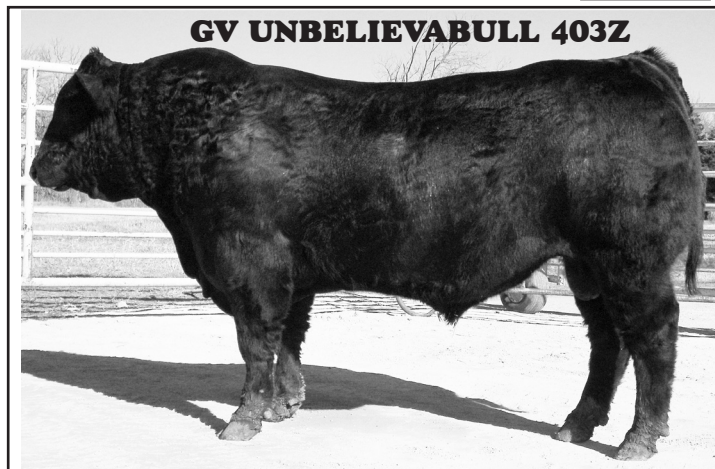
GV	PUREBRED	DBL PLD/DBL BLK	EPDs % Rank
	100/87.6	BD: 2/14/12	CD: 13 20
	VIRG403Z	NPM-2017958	BW: 1.6
	ROMN JUSTICE		WW: 50 30
Sire	ROMN UNBELIEVABULL 141U		YW: 102 10
	ROMN SARAH 42S		MA: 29 10
	AUTO Dollar General 122R		CM: 8 20
Dam	GV MISS \$ GENERAL 033X		SC: 0.9 10
	GV Miss Real Deal 637S		DC: 21
			CW: 32 30
			RE: 0.94 1
			YG: -0.15 20
			MS: -0.08
			\$MI: 44
BW: 88 ADJ WW: 632 ADJ YW: 1182			

LOT 3 **GV STETSON 405Z**

GV	PUREBRED	DBL PLD/DBL BLK	EPDs % Rank
	100/89.1	BD: 2/21/12	CD: 13 20
	VIRG405Z	NPM-2017960	BW: 0.8 30
	JCL Lodestar 27L		WW: 55 20
Sire	RUNL STETSON 850S		YW: 100 10
	RUNL 72L		MA: 22
	Wulfs Space Ship 3223S		CM: 11 4
Dam	GV MISS SPACE SHIP 001X		SC: 1.2 1
	GV Miss General 823U		DC: 27 30
			CW: 38 20
			RE: 0.79 10
			YG: -0.06
			MS: 0.02 40
			\$MI: 48 20
BW: 86 ADJ WW: 612 ADJ YW: 1089			


LOT 4 **GV UNBELIEVABULL 406Z**

GV	PUREBRED	DBL PLD/DBL BLK	EPDs % Rank
	100/87.	BD: 2/21/12	CD: 11 30
	VIRG406Z	NPM-2017961	BW: 1.5
	ROMN JUSTICE		WW: 49 40
Sire	ROMN UNBELIEVABULL 141U		YW: 94 20
	ROMN SARAH 42S		MA: 29 10
	AUTO Dollar General 122R		CM: 7 30
Dam	GV MISS \$ GENERAL 003X		SC: 1.1 2
	GV Miss Lil Bro 811U		DC: 20
			CW: 21
			RE: 0.56
			YG: -0.02
			MS: 0.10 5
			\$MI: 48 20
BW: 87 ADJ WW: 609 ADJ YW: 1116			




2-YEAR-OLD BULLS - LOTS 1-26

LOT 5 **GV X-MAN 414Z**

	PUREBRED	DBL PLD/DBL BLK	EPDs % Rank
	100/90.3	BD: 3/5/12	CD: 17 5
	VIRG414Z	NPM-2018030	BW: 1.0 40
	ROMN Tuff Enuff		WW: 55 20
Sire	GV X-MAN 701X		YW: 105 5
	GV Miss General 841U		MA: 23
	JCL Lodestar 27L		CM: 9 10
Dam	GV MISS LODESTAR 519R		SC: 0.7 20
	GV Miss Stakeout 709G		DC: 1
			CW: 51 2
			RE: 0.83 5
			YG: 0.03
			MS: 0.04 30
			\$MI: 48 20
<hr/>			
	BW: 73	ADJ WW: 627	ADJ YW: 1142




LOT 6 **GV X-MAN 416Z**

	PUREBRED	DBL PLD/RED	EPDs % Rank
	100/90.4	BD: 3/6/12	CD: 12 20
	VIRG416Z	NPM-2010611	BW: 2.2
	ROMN Tuff Enuff 103		WW: 56 10
Sire	GV X-MAN 701X		YW: 97 20
	GV Miss General 841U		MA: 29 10
	GV Deal 318P		CM: 6 30
Dam	GV MISS DEAL 6665S		SC: 0.9 10
	GV Miss Black Jack 662F		DC: 1
			CW: 40 10
			RE: 0.70 20
			YG: -0.02
			MS: 0.03 30
			\$MI: 48 20
<hr/>			
	BW: 81	ADJ WW: 555	ADJ YW: 1069




LOT 7 **GV NET RETURN 421Z**

	LIM-FLEX	DBL PLD/BLACK	EPDs % Rank
	50/47.5	BD: 3/6/12	CD: 12 20
	VIRG421Z	LFM-2018417	BW: -1.7 10
	S A V 8180 Traveler 004		WW: 45
Sire	MF NET RETURN 8197		YW: 82
	S A V May 2436		MA: 34 10
	OKLF Linebacker 341L		CM: 3
Dam	GV MISS LINEBACKER 7721T		SC: 1
	GV Miss Polled STKH 676F		DC: 1
			CW: 48 10
			RE: 0.03
			YG: 0.35 20
			MS: 0.26 40
			\$MI: 50
<hr/>			
	BW: 74	ADJ WW: 586	ADJ YW: 1000

LOT 8 **GV DOLLAR GENERAL 420Z**

	PUREBRED	DBL PLD/DBL BLK	EPDs % Rank
	100/90.5	BD: 3/6/12	CD: 16 10
	VIRG420Z	NPM-2018035	BW: 1.0 40
	LVLS Secret Weapon 4408K		WW: 60 5
Sire	AUTO DOLLAR GENERAL 122R		YW: 108 4
	AUTO Kyria 232K		MA: 33 2
	Wulfs Space Ship 3223S		CM: 11 4
Dam	GV MISS SPACE SHIP 002X		SC: 1.2 1
	GV Miss Lodestar 808U		DC: 16
			CW: 44 5
			RE: 0.51
			YG: 0.10
			MS: 0.06 20
			\$MI: 49 20
<hr/>			
	BW: 80	ADJ WW: 638	ADJ YW: 1124

LOT 9 **GV STETSON 425Z**

	PUREBRED	SCURRED/DBL BLK	EPDs % Rank
	100/89.4	BD: 3/11/12	CD: 14 20
	VIRG425Z	NPM-2018041	BW: -1.4 5
	JCL Lodestar 27L		WW: 51 30
Sire	RUNL STETSON 850S		YW: 95 20
	RUNL 72L		MA: 23
	ROMN Tuff Enuff 103T		CM: 10 10
Dam	GV MISS TUFF 037X		SC: 1.1 2
	GV Miss Gentleman 4410P		DC: 30 20
			CW: 42 10
			RE: 0.63 40
			YG: -0.07
			MS: 0.14 3
			\$MI: 51 5
<hr/>			
	BW: 89	ADJ WW: 632	ADJ YW: 1080

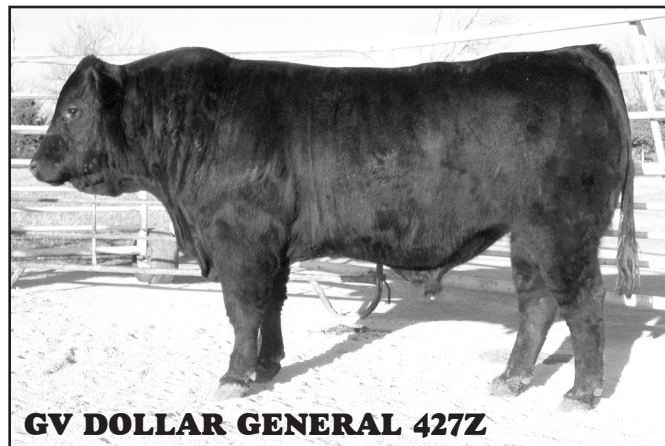


**Your full service
seed stock supplier**


2-YEAR-OLD BULLS - LOTS 1-26

LOT 10 **GV DOLLAR GENERAL 427Z**


	PUREBRED	DBL PLD/BLACK	EPDs % Rank
	100/89.6	BD: 3/12/12	CD: 12 30
	VIRG427Z	NPM-2018044	BW: 3.1
	LVLS Secret Weapon 4408K		WW: 61 4
Sire	AUTO DOLLAR GENERAL 122R		YW: 109 3
	AUTO Kyria 232K		MA: 31 5
	ROMN Justice		CM: 9 10
Dam	GV MS JUSTICE 934W		SC: 0.6 30
	GV Miss Kate 029K		DC: 22
	BW: 87 ADJ WW: 645 ADJ YW: 1163		CW: 50 3
			RE: 0.70 20
			YG: 0.04
			MS: 0.03 30
			\$MI: 49 20




LOT 11 **GV X-MAN 428Z**

	PUREBRED	SCURRED/RED	EPDs % Rank
	100/89.7	BD: 3/13/12	CD: 16 10
	VIRG428Z	NPM-2018045	BW: 1.0 40
	ROMN Tuff Enuff 103T		WW: 55 20
Sire	GV X-MAN 701X		YW: 105 5
	GV Miss General 841U		MA: 25 30
	JCL Lodestar 27L		CM: 11 4
Dam	GV MISS LODESTAR 720T		SC: 0.7 20
	GV Miss Rambo 012K		DC: 43 10
	BW: 81 ADJ WW: 604 ADJ YW: 1113		RE: 0.58
			YG: 0.00
			MS: 0.05 20
			\$MI: 49 20


LOT 12 **GV X-MAN 432Z**

	PUREBRED	DBL PLD/DBL BLK	EPDs % Rank
	100/90.4	BD: 3/17/12	CD: 14 20
	VIRG432Z	NPM-2018050	BW: 1.1 40
	ROMN Tuff Enuff 103T		WW: 53 20
Sire	GV X-MAN 701X		YW: 102 10
	GV Miss General 841U		MA: 24 40
	JCL Lodestar 27L		CM: 9 10
Dam	GV MISS LODESTAR 412P		SC: 0.6 30
	GV Miss Polled Shade 541E		DC: 36 20
	BW: 81 ADJ WW: 573 ADJ YW: 1099		RE: 0.43
			YG: 0.10
			MS: 0.10 5
			\$MI: 49 20


LOT 13 **GV X-MAN 435Z**

	PUREBRED	DBL PLD/DBL BLK	EPDs % Rank
	100/89.9	BD: 3/20/12	CD: 16 10
	VIRG435Z	NPM-2018053	BW: -0.2 20
	ROMN Tuff Enuff 103T		WW: 49 40
Sire	GV X-MAN 701X		YW: 95 20
	GV Miss General 841U		MA: 24 40
	JCL Lodestar 27L		CM: 9 10
Dam	GV MISS LODESTAR 752T		SC: 0.8 20
	GV Miss Beef 445P		DC: 30 40
	BW: 77 ADJ WW: 548 ADJ YW: 1057		RE: 0.38
			YG: 0.02
			MS: 0.08 10
			\$MI: 48 20


LOT 14 **GV DOLLAR GENERAL 437Z**

	PUREBRED	DBL PLD/DBL BLK	EPDs % Rank
	100/90.5	BD: 3/22/12	CD: 6
	VIRG437Z	NPM-2018055	BW: 3.4
	AUTO Dollar General 122R		WW: 58 10
Sire	GV DOLLAR GENERAL 743X		YW: 96 20
	GV Miss Beef 330N		MA: 30 10
	Mags Jumanji		CM: 3
Dam	GV MISS JUMANJI 204M		SC: 0.8 20
	GV Miss Kate 029K		DC: 41 10
	BW: 81 ADJ WW: 631 ADJ YW: 1125		RE: 0.52
			YG: 0.04
			MS: 0.07 10
			\$MI: 49 20

LOT 15 **GV X-MAN 439Z**


	PUREBRED	SCURRED/DBL BLK	EPDs % Rank
	100/90.8	BD: 3/23/12	CD: 11 30
	VIRG439Z	NPM-2018057	BW: 3.3
	ROMN Tuff Enuff 103T		WW: 57 10
Sire	GV X-MAN 701X		YW: 101 10
	GV Miss General 841U		MA: 29 10
	GV Lodestar 409R		CM: 9 10
Dam	GV MISS LODESTAR 804U		SC: 0.8 20
	GV Miss Deal 4466P		DC: 40 10
	BW: 92 ADJ WW: 580 ADJ YW: 1089		RE: 0.59
			YG: 0.01 40
			MS: 0.07 10
			\$MI: 50 10

LOT 16 **GV DOLLAR GENERAL 441Z**

	PUREBRED	DBL PLD/DBL BLK	EPDs % Rank
	100/91.2	BD: 3/24/12	CD: 17 5
	VIRG441Z	NPM-2018059	BW: -0.5 20
	LVLS Secret Weapon 4408K		WW: 56 10
Sire	AUTO DOLLAR GENERAL 122R		YW: 100 10
	AUTO Kyria 232K		MA: 34 2
	OKLF Linebacker 341L		CM: 9 10
Dam	GV MISS LINEBACKER 7724T		SC: 0.6 30
	GV Miss Deal 3328N		DC: 12
	BW: 75 ADJ WW: 527 ADJ YW: 1044		CW: 30 40
			RE: 0.48
			YG: -0.01
			MS: 0.06 20
			\$MI: 49 20

2-YEAR-OLD BULLS - LOTS 1-26


LOT 17 **GV X-MAN 440Z**

	PUREBRED	DBL PLD/DBL BLK	EPDs % Rank
	100/90.9	BD: 3/24/12	CD: 14 20
	VIRG440Z	NPM-2018058	BW: 1.3 40
	ROMN Tuff Enuff 103T		WW: 58 10
Sire	GV X-MAN 701X		YW: 108 4
	GV Miss General 841U		MA: 30 10
	JCL Lodestar 27L		CM: 9 10
	SC: 0.6 30		DC:
Dam	GV MISS LODESTAR 623S		CW: 54 1
	GV Miss Liberty 021K		RE: 0.87 3
			YG: 0.00
	BW: 79	ADJ WW: 631	MS: 0.08 10
		ADJ YW: 1135	\$MI: 50 10



GV X-MAN 440Z


LOT 18 **GV X-MAN 447Z**

	PUREBRED	DBL PLD/DBL BLK	EPDs % Rank
	100/90	BD: 3/31/12	CD: 13 20
	VIRG447Z	NPM-2018064	BW: 2.1
	ROMN Tuff Enuff 103T		WW: 59 5
Sire	GV X-MAN 701X		YW: 113 1
	GV Miss General 841U		MA: 25 30
	JCL Lodestar 27L		CM: 8 20
	SC: 0.9 10		DC:
Dam	GV MISS LODESTAR 712T		CW: 54 1
	GV Miss Beef 557R		RE: 0.86 4
			YG: 0.08
	BW: 88	ADJ WW: 639	MS: 0.03 30
		ADJ YW: 1221	\$MI: 48 20




GV X-MAN 447Z

LOT 19 **GV DOLLAR GENERAL 456Z**

	PUREBRED	DBL PLD/DBL BLK	EPDs % Rank
	100/90	BD: 4/8/12	CD: 15 10
	VIRG456Z	NPM-2018081	BW: 0.7 30
	LVLS Secret Weapon 4408K		WW: 58 10
Sire	AUTO DOLLAR GENERAL 122R		YW: 102 10
	AUTO Kyria 232K		MA: 31 5
	JCL Lodestar 27L		CM: 11 4
	SC: 0.6 30		DC: 17
Dam	GV MISS LODESTAR 760T		CW: 37 20
	GV Miss Beef 310N		RE: 0.30
			YG: 0.09
	BW: 80	ADJ WW: 620	MS: 0.18 1
		ADJ YW: 1087	\$MI: 53 2


LOT 20 **GV OVERTIME 458Z**

	LIM-FLEX	DBL PLD/DBL BLK	EPDs % Rank
	75/69.4	BD: 4/10/12	CD: 8
	VIRG458Z	LFM-2018418	BW: 0.2 40
	HC Overtime 972		WW: 41
Sire	GV OVERTIME 433T		YW: 89
	GV Miss Gridiron 1105L		MA: 28
	Bon View New Design 878		CM: 2
	SC: 0.6 30		DC: 18 30
Dam	GV MISS NEW DESIGN 511R		CW: 19
	GV Miss Guardian 100L		RE: 0.42 5
			YG: 0.04 5
	BW: 83	ADJ WW: 561	MS: 0.14
		ADJ YW: 1070	\$MI: 47

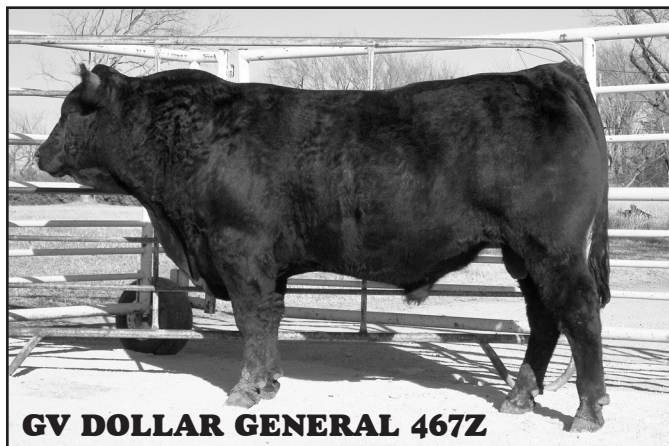
LOT 21 **GV DOLLAR GENERAL 465Z**

	PUREBRED	POLLED/DBL BLK	EPDs % Rank
	100/90.7	BD: 4/14/12	CD: 13 20
	VIRG465Z	NPM-2018096	BW: 1.2 40
	LVLS Secret Weapon 4408K		WW: 52 30
Sire	AUTO DOLLAR GENERAL 122R		YW: 91 30
	AUTO Kyria 232K		MA: 39 1
	GV Lodestar 409R		CM: 11 4
	SC: 0.8 20		DC: 16
Dam	GV MISS LODESTAR 928W		CW: 31 40
	VIRG 364N		RE: 0.45
			YG: 0.02
	BW: 82	ADJ WW: 604	MS: 0.11 5
		ADJ YW: 1044	\$MI: 49 20

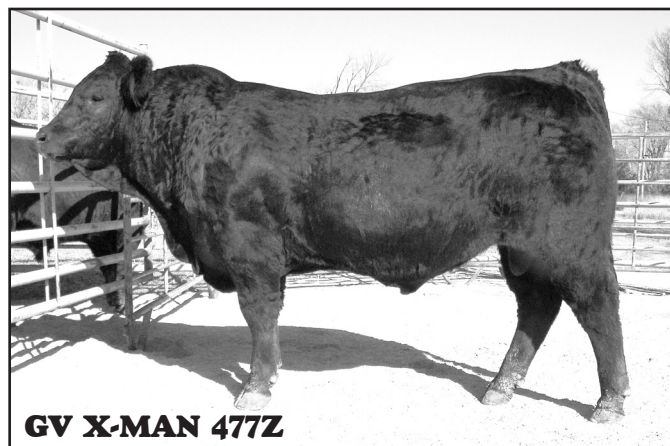
LOT 22 **GV OVERTIME 466Z**

	PUREBRED	POLLED/RED	EPDs % Rank
	100/91.8	BD: 4/18/12	CD: 8
	VIRG466Z	NPM-2018097	BW: 2.2
	HC Overtime 972		WW: 55 20
Sire	GV OVERTIME 433T		YW: 101 10
	GV Miss Gridiron 1105L		MA: 23
	GV MVP 429S		CM: 4
	SC: 0.9 10		DC: 16
Dam	GV MISS MVP 869U		CW: 33 30
	GV Miss Lodestar 559R		RE: 0.73 20
			YG: -0.11 40
	BW: 85	ADJ WW: 589	MS: -0.01
		ADJ YW: 1098	\$MI: 47 30

2-YEAR-OLD BULLS - LOTS 1-26



GV DOLLAR GENERAL 467Z



GV X-MAN 477Z

LOT 23 **GV DOLLAR GENERAL 467Z**

	PUREBRED	DBL PLD/DBL BLK	EPDs % Rank
	100/89.8	BD: 4/19/12	CD: 12 30
	VIRG467Z	NPM-2018098	BW: 2.4
			WW: 60 5
			YW: 106 5
			MA: 36 1
Sire	AUTO DOLLAR GENERAL 122R		CM: 9 10
	AUTO Kyria 232K		SC: 0.6 30
	Wulfs Nobel Prize 3861N		DC: 22
Dam	GV MISS N. PRIZE 778T		CW: 42 10
	GV Miss Rambo 280M		RE: 0.76
			YG: -0.06
			MS: 0.14 3
			\$MI: 53 2
<hr/>			
	BW: 82	ADJ WW: 611	ADJ YW: 1137

LOT 25 **GV X-MAN 477Z**

	PUREBRED	DBL PLD/DBL BLK	EPDs % Rank
	100/91.5	BD: 4/28/12	CD: 11 30
	VIRG477Z	NPM-2018114	BW: 2.9
			WW: 68 1
			YW: 120 1
			MA: 29 10
Sire	GV X-MAN 701X		CM: 8 20
	ROMN Tuff Enuff 103T		SC: 0.8 20
	GV Miss General 841U		DC:
	JCL Lodestar 27L		CW: 60 1
Dam	GV MISS LODESTAR 545R		RE: 0.73 20
	GV Miss P Steakhouse 613F		YG: 0.02
			MS: 0.11 5
			\$MI: 54 2
<hr/>			
	BW: 87	ADJ WW: 686	ADJ YW: 1217

LOT 24 **GV DOLLAR GENERAL 472Z**

	PUREBRED	POLLED/DBL BLK	EPDs % Rank
	100/91.6	BD: 4/22/12	CD: 14 20
	GVHL472Z	NPM-2018107	BW: 1.4 40
			WW: 56 10
			YW: 102 10
			MA: 36 1
Sire	AUTO DOLLAR GENERAL 122R		CM: 10 10
	AUTO Kyria 232K		SC: 0.8 20
	RUNL RD Mercer 544R		DC: 14
Dam	GVHL MS MERCER 983W		CW: 38 20
	GVHL Miss Lodestar 605S		RE: 0.51
			YG: 0.03
			MS: 0.09 10
			\$MI: 50 10
<hr/>			
	BW: 88	ADJ WW: 621	ADJ YW: 1106

LOT 26 **GV DOLLAR GENERAL 481Z**


	PUREBRED	DBL PLD/DBL BLK	EPDs % Rank
	100/90.2	BD: 5/4/12	CD: 8
	VIRG481Z	NPM-2018119	BW: 2.9
			WW: 64 2
			YW: 111 2
			MA: 30 10
Sire	AUTO DOLLAR GENERAL 122R		CM: 8 20
	LVLS Secret Weapon 4408K		SC: 0.8 20
	AUTO Kyria 232K		DC: 18
	GV Mr Beef 522G		CW: 38 20
Dam	GV MISS BEEF 250M		RE: 0.50
	GV Miss First Down 718G		YG: 0.08
			MS: 0.11 5
			\$MI: 53 2
<hr/>			
	BW: 87	ADJ WW: 670	ADJ YW: 1184

**CERTIFIED
PERFORMANCE
HERD**

We Appreciate Your Attendance!

FALL BULLS - LOTS 27-60


LOT 27 GV URBAN COWBOY 504Z

 PUREBRED 100/89.3 VIRG504Z	DBL PLD/RED BD: 9/3/12 NPM-2024777	EPDs % Rank	
		CD: 16	10
		BW: -0.1	20
		WW: 48	40
		YW: 94	20
		MA: 16	
		CM: 9	10
		SC: 0.4	
		DC: 28	30
		CW: 24	
		RE: 0.54	
		YG: -0.16	10
		MS: 0.04	30
		\$MI: 47	30
Sire WULFS URBAN COWBOY 2149U Wulfs Meadow Grass 2149M ROMN Tuff Enuff 103T			
Dam GV MISS TUFF ENUFF 9904W GV Miss Lodestar 7715T			
BW: 79 ADJ WW: 612 ADJ YW: 1111			

LOT 28 GV BLUESTEM 503Z

 LIM-FLEX 50/46.3 VIRG503Z	DBL PLD/DBL BLK BD: 9/3/12 LFM-2024776	EPDs % Rank	
		CD: 7	
		BW: -0.5	30
		WW: 59	10
		YW: 106	20
		MA: 30	30
		CM: 5	20
		SC:	
		DC:	
		CW:	
		RE:	
		YG:	
		MS:	
		\$MI:	
Sire BUFORD BLUESTEM 9974 S A V Net Worth 4200 LCC Erica NG724 JCL Lodestar 27L			
Dam GV MISS LODESTAR 0046X GV Miss Coach 3304N			
BW: 77 ADJ WW: 728 ADJ YW: 1178			


LOT 29 GV STETSON 505Z

 PUREBRED 100/90.2 VIRG505Z	POLLED/BLACK BD: 9/4/12 NPM-2024778	EPDs % Rank	
		CD: 14	20
		BW: -.04	20
		WW: 51	30
		YW: 94	20
		MA: 20	
		CM: 10	10
		SC: 0.9	10
		DC: 33	10
		CW: 22	
		RE: 0.62	40
		YG: -0.11	40
		MS: 0.04	30
		\$MI: 48	20
Sire RUNL STETSON 850S RUNL 72L GV Overtime 433T			
Dam GV MISS OVERTIME 9941W GV Miss Overtime 7730T			
BW: 74 ADJ WW: 646 ADJ YW: 1041			



GV BLUESTEM 503Z


LOT 30 GVHL X-MAN 507Z

 PUREBRED 100/90.8 GVHL507Z	DBL PLD/DBL BLK BD: 9/5/12 NPM-2024780	EPDs % Rank	
		CD: 20	2
		BW: -0.2	4
		WW: 54	20
		YW: 104	5
		MA: 28	20
		CM: 11	4
		SC: 0.6	30
		DC:	
		CW: 47	4
		RE: 0.67	30
		YG: 0.04	
		MS: 0.07	10
		\$MI: 48	20
Sire GV X-MAN 701X ROMN Tuff Enuff 103T GV Miss General 841U JCL Lodestar 27L			
Dam GVHL MISS LODESTAR 9912W GVHL Miss Deal 2214M			
BW: 66 ADJ WW: 680 ADJ YW: 1162			



GVHL X-MAN 507Z

LOT 31 GV X-MAN 508Z


 PUREBRED 100/89 VIRG508Z	DBL PLD/RED BD: 9/6/12 NPM-2024781	EPDs % Rank	
		CD: 17	5
		BW: 0.1	20
		WW: 54	20
		YW: 104	5
		MA: 27	20
		CM: 10	10
		SC: 0.7	20
		DC:	
		CW: 42	10
		RE: 0.69	20
		YG: -0.01	
		MS: 0.09	10
		\$MI: 50	10
Sire GV X-MAN 701X ROMN Tuff Enuff 103T GV Miss General 841U Hunt Ross 42R			
Dam GV MS ROSS 0035X GV Miss Lodestar 7715T			
BW: 72 ADJ WW: 649 ADJ YW: 1111			




GV X-MAN 508Z

FALL BULLS - LOTS 27-60


LOT 32 GV \$GENERAL 513Z

 PUREBRED DBL PLD/DBL BLK 100/90.5 BD: 9/8/12 VIRG513Z NPM-2024786	EPDs % Rank
	CD: 11 30 BW: 2.4 WW: 59 5 YW: 106 5 MA: 33 2 CM: 9 10 SC: 1.0 4 DC: 16 CW: 37 20 RE: .048 YG: 0.09 MS: 0.12 4 \$MI: 51 5
Sire AUTO DOLLAR GENERAL 122R AUTO Kyria 232K Wulfs sace Ship 3223S	
Dam GV MS SPACE SHIP 0053X GV Miss Lodestar 8852U	
BW: 86 ADJ WW: 659 ADJ YW: 1126	


LOT 33 GV BLUESTEM 515Z

 LIM-FLEX DBL PLD/DBL BLK 50/45 BD: 9/10/12 VIRG515Z LFM-2024788	EPDs % Rank
	CD: 7 BW: 0.5 WW: 55 30 YW: 99 40 MA: 32 20 CM: 5 20 SC: DC: CW: RE: YG: MS: \$MI:
Sire BUFORD BLUESTEM 9974 S A V Net Worth 4200 LCC Erica NG724 Hunt Ross 42R	
Dam GV MISS ROSS 7774T GV Miss Fever 423P	
BW: 85 ADJ WW: 689 ADJ YW: 1089	


LOT 34 GV \$GENERAL 516Z

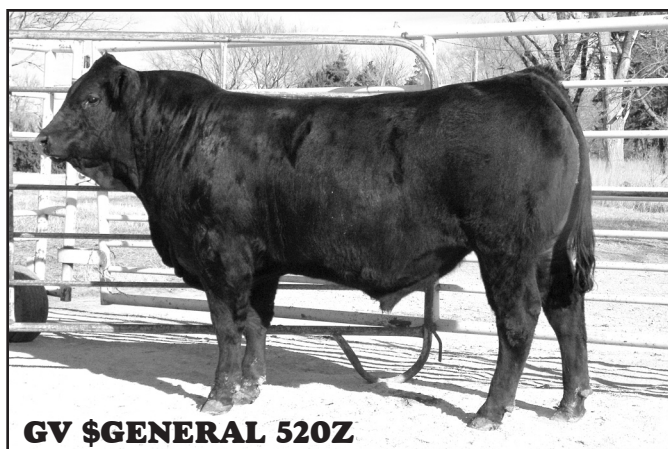
 PUREBRED DBL PLD/BLACK 100/92.7 BD: 9/11/12 VIRG516Z NPM-2024789	EPDs % Rank
	CD: 8 BW: 3.2 WW: 60 5 YW: 98 10 MA: 27 20 CM: 8 20 SC: 1.0 4 DC: CW: 34 30 RE: 0.52 YG: -0.01 MS: 0.06 20 \$MI: 50 10
Sire GV DOLLAR GENERAL 743X AUTO Dollar General 122R GV Miss Beef 330N GV Lodestar 409R	
Dam GV MISS LODESTAR 8845U GV Miss Fever 3334N	
BW: 86 ADJ WW: 650 ADJ YW: 1082	

LOT 35 GVHL URBAN COWBOY 518Z


 PUREBRED DBL PLD/RED 100/89.3 BD: 9/12/12 GVHL518Z NPM-2024794	EPDs % Rank
	CD: 13 20 BW: 0.6 30 WW: 47 40 YW: 88 40 MA: 19 CM: 7 30 SC: 0.6 30 DC: 25 40 CW: 24 RE: 0.60 40 YG: -0.18 10 MS: 0.02 40 \$MI: 46 30
Sire WULFS URBAN COWBOY 2149U Wulfs Realtor 1503R Wulfs Meadow Grass 2149M ROMN Tuff Enuff 103T	
Dam GVHL MISS TUFF ENUFF 9911 GV Miss Kaboom 4431P	
BW: 85 ADJ WW: 641 ADJ YW: 1063	

LOT 36 GV \$GENERAL 520Z

 PUREBRED DBL PLD/BLACK 100/92.6 BD: 9/12/12 VIRG520Z NPM-2024798	EPDs % Rank
	CD: 13 20 BW: 2.0 WW: 62 3 YW: 106 5 MA: 33 2 CM: 7 30 SC: 0.5 DC: 10 CW: 34 30 RE: 0.55 YG: -0.02 MS: 0.08 10 \$MI: 52 3
Sire AUTO DOLLAR GENERAL 122R AUTO Kyria 232K OKLF Linebacker 341L	
Dam GV MISS LINEBACKER 7716T GV Miss P Steakhouse 642F	
BW: 80 ADJ WW: 674 ADJ YW: 1186	



LOT 37 GV ROSS 524Z

 PUREBRED POLLED/RED 100/90.4 BD: 9/13/12 VIRG524Z NPM-2024806	EPDs % Rank
	CD: 16 10 BW: -1.5 5 WW: 35 YW: 73 MA: 23 CM: 7 30 SC: 0.5 DC: CW: 19 RE: 0.74 10 YG: -0.19 5 MS: 0.11 \$MI: 38
Sire GV ROSS 308W Hunt Ross 42R GV Miss Magic 6666S Devons The Real Deal	
Dam GV MISS REAL DEAL 637S GV Miss Guardian 100L	
BW: 60 ADJ WW: 605 ADJ YW: 1032	

Breed Group Means for Carcass Composition Traits


Breed	Dressing Percent	Carcass Weight	Adjusted Fat Thickness	Ribeye Area	Percent Retail Product	Percent Fat Trim	Sensory Tender*
Limousin	63.4	728	0.17	13.4	72.3	13.4	5.75
Hereford	60.3	675	0.46	10.5	60.1	25.5	5.63
Angus	61.3	697	0.46	10.5	61.5	24.4	5.80
Gelbvieh	59.9	750	0.14	13.0	70.0	14.2	5.30
Simmental	59.8	767	0.16	12.6	68.4	15.5	5.83
Charolais	60.7	767	0.14	12.5	68.7	15.0	5.23

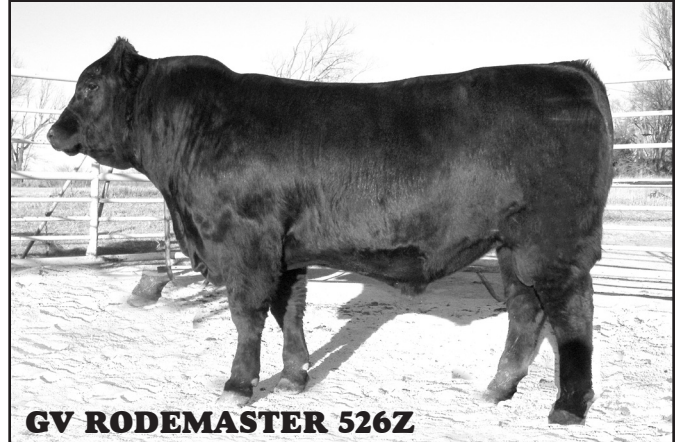
Technical Bulletin Number 1875, U.S. Meat Animal Research

*MARC Progress Report 21. Higher scores = more tender product.

FALL BULLS - LOTS 27-60

LOT 38 **GV RODEMASTER 526Z**

 LIM-FLEX 50/46.7 VIRG526Z	DBL PLD/DBL BLK BD: 9/14/12 LFM-2025122	EPDs % Rank	
		CD: 10	30
		BW: 0.6	
		WW: 54	30
		YW: 102	30
		MA: 30	30
		CM: 5	20
		SC: 0.5	40
		DC: 12	
		CW: 48	10
		RE: -0.05	
		YG: 0.50	2
		MS: 0.41	10
		\$MI: 57	2
Sire LH RODEMASTER 338R Vermilion E Blackbird9546 Bon View New Design 878			
Dam GV MISS NEW DESIGN 517R GV Miss Liberty 021K			
BW: 79 ADJ WW: 669 ADJ YW: 1114			



GV RODEMASTER 526Z

LOT 39 **GV \$GENERAL 528Z**

 PUREBRED 100/93.2 VIRG528Z	POLLED/BLACK BD: 9/15/12 NPM-2024851	EPDs % Rank	
		CD: 9	
		BW: 2.7	
		WW: 52	30
		YW: 96	20
		MA: 35	1
		CM: 7	30
		SC: 0.5	
		DC: 10	
		CW: 22	
		RE: 0.50	
		YG: -0.03	
		MS: 0.05	20
		\$MI: 48	20
Sire AUTO DOLLAR GENERAL 122R AUTO Kyria 232K Mr Absolute ENB 416A			
Dam GV MISS ABSOLUTE 1111L GVHL Miss Polled Shade 524E			
BW: 83 ADJ WW: 624 ADJ YW: 1083			

 **CERTIFIED
PERFORMANCE
HERD**




GV X-MAN 529Z




GV RODEMASTER 530Z

LOT 40 **GV X-MAN 529Z**


 PUREBRED 100/89.6 VIRG529Z	DBL PLD/DBL BLK BD: 9/16/12 NPM-2024852	EPDs % Rank	
		CD: 14	20
		BW: 1.6	
		WW: 59	5
		YW: 107	4
		MA: 28	20
		CM: 9	10
		SC: 0.8	20
		DC:	
		CW: 48	4
		RE: 0.73	20
		YG: 0.02	
		MS: 0.02	40
		\$MI: 48	20
Sire GV X-MAN 701X GV Miss General 841U JCL Lodestar 27L			
Dam GV MS LODESTAR 0024X GV Miss Guardian 3318N			
BW: 84 ADJ WW: 694 ADJ YW: 1121			

LOT 41 **GV RODEMASTER 530Z**

 LIM-FLEX 50/44.9 VIRG530Z	DBL PLD/DBL BLK BD: 9/16/12 LFM-2025123	EPDs % Rank	
		CD: 8	
		BW: .08	
		WW: 54	30
		YW: 101	30
		MA: 32	20
		CM: 3	
		SC: 0.3	
		DC: 9	
		CW: 49	10
		RE: -0.17	
		YG: 0.56	
		MS: 0.41	10
		\$MI: 57	20
Sire LH RODEMASTER 338R Vermilion E Blackbird9546 Bon View New Design 878			
Dam GV MISS NEW DESIGN 516R GV Miss Outcross 120L			
BW: 82 ADJ WW: 683 ADJ YW: 1165			

FALL BULLS - LOTS 27-60

LOT 42 **GV \$GENERAL 533Z**


	PUREBRED	DBL PLD/DBL BLK	EPDs % Rank	
	100/92.1	BD: 9/17/12	CD: 10	40
	VIRG533Z	NPM-2024855	BW: 2.7	
	AUTO DOLLAR GENERAL 122R		WW: 71	1
Sire	GV DOLLAR GENERAL 743X		YW: 117	1
	GV Miss Beef 330N		MA: 31	5
	JCL Lodestar 27L		CM: 9	10
Dam	GV MISS LODESTAR 8814U		SC: 0.6	30
	GVHL Miss Gentleman 3307N		DC:	
			CW: 47	4
			RE: 0.57	
			YG: 0.05	
			MS: 0.10	5
			\$MI: 54	2
	BW: 86	ADJ WW: 772	ADJ YW: 1207	

Meat Animal Research Center Trial
Results - Four Major Continental Breeds
Limousin • Simmental • Gelbvieh • Charlois

LIMOUSIN RANKS #1


Feed Efficiency
Fat Thickness (lowest)
1st Calf Heifers % Born Alive
1st Calf Heifers % Weaned
4-6 Year Old Cows % Weaned

LOT 43 **GV X-MAN 535Z**


	PUREBRED	DBL PLD/DBL BLK	EPDs % Rank	
	100/90.1	BD: 9/18/12	CD: 12	30
	VIRG535Z	NPM-2024857	BW: 3.1	
	ROMN Tuff Enuff 103T		WW: 59	5
Sire	GV X-MAN 701X		YW: 116	1
	GV Miss General 841U		MA: 27	20
	JCL Lodestar 27L		CM: 10	10
Dam	GV MS LODESTAR 731T		SC: 0.5	
	GV Miss Rambo 859H		DC:	
			CW: 44	5
			RE: 0.70	20
			YG: 0.02	
			MS: 0.06	20
			\$MI: 50	10
	BW: 84	ADJ WW: 647	ADJ YW: 1159	




LOT 44 **GVHL \$GENERAL 536Z**

	PUREBRED	DBL PLD/DBL BLK	EPDs % Rank	
	100/89.5	BD: 9/19/12	CD: 15	10
	GVHL536Z	NPM-2024858	BW: 0.9	20
	LVLS Secret Weapon 4408K		WW: 55	20
Sire	AUTO DOLLAR GENERAL 122R		YW: 99	10
	AUTO Kyria 232K		MA: 35	1
	ROMN Unbelievabull 141U		CM: 9	10
Dam	GVHL MS UNBELIEVABUL 0013		SC: 0.5	
	GVHL Miss Linebacker 7707		DC: 17	
			CW: 35	20
			RE: 0.63	40
			YG: -0.02	
			MS: 0.08	10
			\$MI: 50	10
	BW: 78	ADJ WW: 669	ADJ YW: 1109	

LOT 45 **GV URBAN COWBOY 538Z**

	PUREBRED	DBL PLD/RED	EPDs % Rank	
	100/89.6	BD: 9/20/12	CD: 10	40
	VIRG538Z	NPM-2024899	BW: 2.0	
	Wulfs Realtor 1503R		WW: 45	
Sire	WULFS URBAN COWBOY 2149U		YW: 86	
	Wulfs Meadow Grass 2149M		MA: 21	
	KRVN Magic Man 033M		CM: 6	30
Dam	GV MISS MAGIC MAN 627S		SC: 0.7	20
	GV Miss Deal 313N		DC: 24	40
			CW: 27	
			RE: 0.62	40
			YG: -0.17	10
			MS: -0.03	
			\$MI: 44	
	BW: 76	ADJ WW: 625	ADJ YW: 1052	

LOT 46 **GV \$GENERAL 542Z**

	PUREBRED	DBL PLD/DBL BLK	EPDs % Rank	
	100/91.6	BD: 9/23/12	CD: 10	40
	VIRG542Z	NPM-2024863	BW: 2.2	
	LVLS Secret Weapon 4408K		WW: 54	20
Sire	AUTO DOLLAR GENERAL 122R		YW: 96	20
	AUTO Kyria 232K		MA: 33	2
	RRDC 246M		CM: 9	10
Dam	GV MISS COOKIE 6653S		SC: 0.2	
	GV Miss Down 990J		DC: 13	
			CW: 25	
			RE: 0.49	
			YG: 0.04	
			MS: 0.09	10
			\$MI: 49	20
	BW: 81	ADJ WW: 695	ADJ YW: 1050	

FALL BULLS - LOTS 27-60

LOT 47 **GV RODEMASTER 543Z**

GV	LIM-FLEX	DBL PLD/DBL BLK	EPDs % Rank	
	62/57.5	BD: 9/23/12	CD: 14	5
	VIRG543Z	LFM-2025124	BW: 0.5	
	JCL Lodestar 27L		WW: 56	20
Sire	LH RODEMASTER 338R		YW: 104	20
	Vermilion E Blackbird9546		MA: 29	40
	OKLF Linebacker 341L		CM: 5	20
Dam	GV MISS LINEBACKER 6611S		SC: 0.4	
	GV Miss New Design 4407P		DC: 9	
			CW: 56	4
			RE: 0.18	30
			YG: 0.40	
			MS: 0.28	40
			\$MI: 54	30
BW: 80			ADJ WW: 653	
			ADJ YW: 1179	



LOT 48 **GV ROSS 545Z**

GV	PUREBRED	DBL PLD/RED	EPDs % Rank	
	100/88.5	BD: 9/25/12	CD: 12	30
	VIRG545Z	NPM-2024865	BW: 0.0	20
	Hunt Ross 42R		WW: 41	
Sire	GV ROSS 308W		\YW: 80	
	GV Miss Magic 6666S		MA: 21	
	Hunt Mr Jock 44J		CM: 8	20
Dam	GV MISS JOCK 7743T		SC: 0.4	
	GV Miss Resolve 1104L		DC: 18	
			CW: 18	
			RE: 0.56	
			YG: -0.14	20
			MS: 0.03	30
			\$MI: 44	
BW: 69			ADJ WW: 635	
			ADJ YW: 1040	

LOT 49 **GV BLUESTEM 547Z**

GV	LIM-FLEX	DBL PLD/DBL BLK	EPDs % Rank	
	50/45.9	BD: 9/26/12	CD: 6	
	VIRG547Z	LFM-2024867	BW: -1.2	20
	S A V Net Worth 4200		WW: 49	
Sire	BUFORD BLUESTEM 9974		YW: 92	
	LCC Erica NG724		MA: 32	20
	Wulfs Shop Talk 2332S		CM: 3	
Dam	GV MISS SHOP TALK 9915W		DC: 18	
	GV Miss Genesis 2278M		CW: 18	
			RE: 0.56	
			YG: -0.14	20
			MS: 0.03	30
			\$MI: 44	
BW: 71			ADJ WW: 602	
			ADJ YW: 1061	



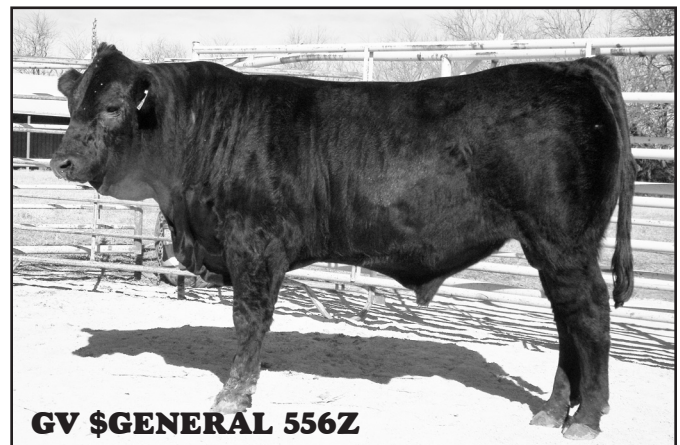
LOT 50 **GV X-MAN 554Z**

GV	PUREBRED	DBL PLD/DBL BLK	EPDs % Rank	
	100/90.2	BD: 10/2/12	CD: 12	30
	VIRG554Z	NPM-2024871	BW: 2.6	
	ROMN Tuff Enuff 103T		WW: 59	5
Sire	GV X-MAN 701X		YW: 111	2
	GV Miss General 841U		MA: 21	
	JCL Lodestar 27L		CM: 10	10
Dam	GV MS LODESTAR 612S		SC: 0.7	20
	GV Miss Fever 2211M		DC: 39	10
			RE: 0.54	
			YG: 0.05	
			MS: 0.04	30
			\$MI: 49	20
BW: 80			ADJ WW: 660	
			ADJ YW: 1122	

GV X-MAN 554Z

LOT 51 **GV \$GENERAL 556Z**


GV	PUREBRED	DBL PLD/DBL BLK	EPDs % Rank	
	100/91.1	BD: 10/2/12	CD: 7	
	VIRG556Z	NPM-2024873	BW: 2.9	
	LVLS Secret Weapon 4408K		WW: 65	2
Sire	AUTO DOLLAR GENERAL 122R		YW: 108	4
	AUTO Kyria 232K		MA: 34	2
	GV Mr Beef 522G		CM: 8	20
Dam	GV MISS BEEF 2260M		SC: 0.6	30
	GV Miss Webster 422D		DC: 18	
			CW: 34	30
			RE: 0.50	
			YG: -0.01	
			MS: 0.09	10
			\$MI: 53	2
BW: 81			ADJ WW: 674	
			ADJ YW: 1106	




GV \$GENERAL 556Z

FALL BULLS - LOTS 27-60


LOT 52 **GV ROSS 559Z**

	PUREBRED	DBL PLD/DBL BLK	EPDs % Rank
	100/89	BD: 10/5/12	CD: 14 20
	VIRG559Z	NPM-2024876	BW: -0.5 20
	Hunt Ross 42R		WW: 49 40
Sire	GV ROSS 308W		YW: 91 30
	GV Miss Magic 6666S		MA: 32 3
	AUTO Dollar General 122R		CM: 9 10
Dam	GV MS \$GENERAL 907W		SC: 0.6 30
	GV Miss Lodestar 773T		DC:
			CW: 28
			RE: 0.51
			YG: -0.03
			MS: 0.08 10
			\$MI: 48 20
BW: 76 ADJ WW: 688 ADJ YW: 1133			

LOT 53 **GV X-MAN 562Z**


	LIM-FLEX	DBL PLD/DBL BLK	EPDs % Rank
	75/67.4	BD: 10/6/12	CD: 12 20
	VIRG562Z	LFM-2025126	BW: 0.9
	ROMN Tuff Enuff 103T		WW: 54 30
Sire	GV X-MAN 701X		YW: 99 40
	GV Miss General 841U		MA: 28
	Bon View New Design 878		CM: 7 5
Dam	GV MISS NEW DESIGN 5503R		SC: 0.5 40
	GV Miss Down 990J		DC:
			CW: 37 40
			RE: 0.31 10
			YG: 0.24 40
			MS: 0.24 40
			\$MI: 53 40
BW: 80 ADJ WW: 746 ADJ YW: 1124			

LOT 54 **GV BLUESTEM 563Z**


	LIM-FLEX	DBL PLD/DBL BLK	EPDs % Rank
	37.5/33.7	BD: 10/7/12	CD: 7
	VIRG563Z	LFM-2025127	BW: -0.3 40
	S A V Net Worth 4200		WW: 63 5
Sire	BUFORD BLUESTEM 9974		YW: 112 10
	LCC Erica NG724		MA: 32 20
	GV MVP 429S		CM: 3
Dam	GV MISS MVP 9939W		SC:
	GV Miss Reality 5551R		DC:
			CW:
			RE:
			YG:
			MS:
			\$MI:
BW: 86 ADJ WW: 726 ADJ YW: 1225			




LOT 55 **GV \$GENERAL 564Z**

	PUREBRED	DBL PLD/BLACK	EPDs % Rank
	100/90.8	BD: 10/7/12	CD: 10 40
	VIRG564Z	NPM-2024878	BW: 1.6
	AUTO Dollar General 122R		WW: 60 5
Sire	GV DOLLAR GENERAL 743X		YW: 102 10
	GV Miss Beef 330N		MA: 28 20
	Wulfs Ransom 3059R		CM: 7 30
Dam	GV MISS RANSOM 8815U		SC: 0.6 30
	GV Miss Beef 964J		DC:
			CW: 29 40
			RE: 0.66 30
			YG: -0.13 30
			MS: 0.01 40
			\$MI: 49 20
BW: 78 ADJ WW: 688 ADJ YW: 1155			

LOT 56 **GV X-MAN 568Z**

	PUREBRED	DBL PLD/RED	EPDs % Rank
	100/90.8	BD: 10/10/12	CD: 14 20
	VIRG568Z	NPM-2024882	BW: 2.1
	ROMN Tuff Enuff 103T		WW: 58 10
Sire	GV X-MAN 701X		YW: 109 3
	GV Miss General 841U		MA: 32 3
	JCL Lodestar 27L		CM: 9 10
Dam	GV MS LODESTAR 745T		SC: 1.0 5
	GV Miss Thunder 779G		DC:
			CW: 49 3
			RE: 0.67 30
			YG: 0.07
			MS: 0.09 10
			\$MI: 50 10
BW: 79 ADJ WW: 701 ADJ YW: 1146			


LOT 57 **GV \$GENERAL 569Z**

	PUREBRED	DBL PLD/BLACK	EPDs % Rank
	100/91.9	BD: 10/12/12	CD: 13 20
	VIRG569Z	NPM-2024883	BW: 1.1 40
	LVLS Secret Weapon 4408K		WW: 62 3
Sire	AUTO DOLLAR GENERAL 122R		YW: 99 10
	AUTO Kyria 232K		MA: 39 1
	OKLF Linebacker 341L		CM: 8 20
Dam	GV MISS LINEBACKER 7718T		SC: 0.6 30
	GV Miss Fever 2227M		DC: 9
			CW: 43 10
			RE: 0.62 40
			YG: -0.01
			MS: 0.10 5
			\$MI: 52 3
BW: 78 ADJ WW: 701 ADJ YW: 1114			



FALL BULLS - LOTS 27-60


LOT 58 **GV X-MAN 574Z**

	PUREBRED	DBL PLD/DBL BLK	EPDs % Rank	
	100/90	BD: 10/25/12	CD: 11	30
	VIRG574Z	NPM-2024888	BW: 3.7	
	ROMN Tuff Enuff 103T		WW: 64	2
Sire	GV X-MAN 701X		YW: 111	2
	GV Miss General 841U		MA: 31	5
	Devons The Real Deal		CM: 7	30
Dam	GV MISS DEAL 3328N		SC: 1.0	4
	GV Miss Beef 051K		DC:	
			CW: 45	5
			RE: 0.80	10
			YG: -0.06	
			MS: -0.01	
			\$MI: 49	20
BW: 84 ADJ WW: 705 ADJ YW: 1164				



GV X-MAN 574Z


LOT 59 **GV X-MAN 575Z**

	7/8 Limi-1/8 Angus	DBL PLD/DBL BLK	EPDs % Rank	
	87.5/77.6	BD: 10/28/12	CD: 11	30
	VIRG575Z	NXM-2025128	BW: 2.3	
	ROMN Tuff Enuff 103T		WW: 63	3
Sire	GV X-MAN 701X		YW: 111	2
	GV Miss General 841U		MA: 26	30
	Carrousels MVP		CM: 7	30
Dam	GV MISS MVP 7710T		SC: 1.0	4
	GV Miss Reality 5516R		DC:	
			CW: 51	2
			RE: 0.64	30
			YG: 0.09	
			MS: 0.04	30
			\$MI: 50	10
BW: 83 ADJ WW: 726 ADJ YW: 1139				




GV X-MAN 575Z

LOT 60 **GV X-MAN 580Z**

	PUREBRED	DBL PLD/RED	EPDs % Rank	
	100/90	BD: 11/4/12	CD: 13	20
	VIRG580Z	NPM-2024893	BW: 3.1	
	ROMN Tuff Enuff 103T		WW: 61	4
Sire	GV X-MAN 701X		YW: 112	2
	GV Miss General 841U		MA: 23	
	JCL Lodestar 27L		CM: 10	10
Dam	GV MISS LODESTAR 5512R		SC: 0.8	20
	GV Miss Poll Rambler 569E		DC:	
			CW: 46	5
			RE: 0.69	20
			YG: 0.03	
			MS: 0.09	10
			\$MI: 51	5
BW: 87 ADJ WW: 659 ADJ YW: 1109				


BRED COWS - LOTS 61-80

LOT 61 **GV MS MERCER 184Y**

	PUREBRED	POLLED/BLACK	EPDs	
	100/92.6	BD: 4/28/11	CD: 10	
	LRFL184Y	NPF-1995812	BW: 1.9	
	OKLF Linebacker 341L		WW: 40	
Sire	RUNL RD MERCER 544R		YW: 75	
	RUNL 721F		MA: 30	
	GVHL First Down 638G		CM: 4	
Dam	GV MISS FIRST DOWN 375N		SC: 0.5	
	GV Miss Rambler 822H		DC: 8	
			CW: 21	
			RE: 0.60	
			YG: -0.14	
			MS: -0.07	
			\$MI: 41	
BW: 81 ADJ WW: 583 ADJ YW: 901				

A.I. Date: 06/05/2013 to AUTO Dollar General 122R.
P.E. Dates: 06/15/13 to 07/29/2013 to AUTO Dollar General 122R.


LOT 62 **GV MS OVERTIME 168Y**

	PUREBRED	POLLED/DBL BLK	EPDs	
	100/93.6	BD: 4/6/11	CD: 9	
	VIRG168Y	NPF-2000036	BW: 1.4	
	HC Overtime 972		WW: 39	
Sire	GV OVERTIME 433T		YW: 74	
	GV Miss Gridiron 1105L		MA: 18	
	GV Mr Beef 522G		CM: 3	
Dam	GV MISS BEEF 015K		SC: 0.6	
	GV Miss Roughrider 212B		DC: 12	
			CW: 18	
			RE: 0.72	
			YG: -0.19	
			MS: -0.05	
			\$MI: 41	
BW: 74 ADJ WW: 470 ADJ YW: 812				


A.I. Date: 06/07/2013 to GV X-Man 701X.
P.E. Dates: 06/17/13 to 07/29/2013 to GV Unbelievabull 833X.

BRED COWS - LOTS 61-80


LOT 63 GV MS UNBELIEVABULL 151Y

	PUREBRED	HORNED/DBL BLK	EPDs
	100/88.2	BD: 3/24/11	CD: 14
	LRFL151Y	NPF-1995781	BW: -0.2
			WW: 41
			YW: 76
Sire	ROMN Justice		MA: 21
	ROMN UNBELIEVABULL 141U		CM: 6
	ROMN Sarah 42S		SC: 0.7
	GV Lodestar 419S		DC: 21
Dam	GV MISS LODESTAR 819U		CW: 14
	GV Miss Deal 5577R		RE: 0.68
			YG: -0.11
			MS: -0.03
			\$MI: 42
BW: 73 ADJ WW: 579 ADJ YW: 797			
P.E. Dates: 06/15/13 to 07/29/2013 to GV Ross 308W.			


LOT 64 GV MS UNBELIEVABULL 129Y

	PUREBRED	DBL PLD/DBL BLK	EPDs
	100/87.5	BD: 3/15/11	CD: 13
	LRFL129Y	NPF-1995761	BW: 1.4
			WW: 37
			W: 70
Sire	ROMN Justice		MA: 24
	ROMN UNBELIEVABULL 141U		CM: 6
	ROMN Sarah 42S		SC: 0.4
	DJ Gentleman In Black		DC: 21
Dam	GV MISS GENTLEMAN 205M		CW: 24
	GV Miss Rambo 003K		RE: 0.80
			YG: -0.16
			MS: -0.06
			\$MI: 40
BW: 73 ADJ WW: 540 ADJ YW: 826			
A.I. Date: 06/05/2013 to GV X-Man 701X			
P.E. Dates: 06/15/13 to 07/29/2013 to GV X-Man 701X.			


LOT 65 GV MS ULTIMATE 119Y

	PUREBRED	DBL PLD/BLACK	EPDs
	100/89.7	BD: 3/10/11	CD: 14
	LRFL119Y	NPF-1995751	BW: 1.5
			WW: 47
			YW: 82
Sire	AUTO Dollar General 122R		MA: 29
	MAGS ULTIMATE		CM: 10
	Mags Mandarin 425L		SC: 0.5
	ROMN Tuff Euff 103T		DC: 22
Dam	GV MS TUFF ENUFF 946W		CW: 22
	GV Miss Lodestar 412P		RE: 0.25
			YG: 0.05
			MS: 0.12
			\$MI: 48
BW: 84 ADJ WW: 507 ADJ YW: 886			
P.E. Dates: 05/23/13 to 07/29/2013 to GV Unbelievabull 833X.			


LOT 66 GV MS UNBELIEVABULL 116Y

	PUREBRED	DBL PLD/DBL BLK	EPDs
	100/87.9	BD: 3/8/11	CD: 9
	VIRG116Y	NPF-1995748	BW: 1.6
			WW: 47
			YW: 92
Sire	ROMN Justice		MA: 27
	ROMN UNBELIEVABULL 141U		CM: 6
	ROMN Sarah 42S		SC: 0.5
	AUTO Dollar General 122R		DC: 21
Dam	GV MISS GENERAL 815U		CW: 27
	GV Miss Liberty 019K		RE: 0.71
			YG: -0.10
			MS: 0.01
			\$MI: 45
BW: 81 ADJ WW: 573 ADJ YW: 927			
A.I. Date: 06/06/2013 to WZRK Prime Cut 8012Y.			
P.E. Dates: 06/16/13 to 07/29/2013 to GV Ross 308W.			

LOT 67 GV MS \$GENERAL 107Y


	PUREBRED	DBL PLD/BLACK	EPDs
	100/90.4	BD: 2/19/11	CD: 13
	LRFL107Y	NPF-1995739	BW: 1.4
			WW: 55
			YW: 99
Sire	LVLS Secret Weapon 4408K		MA: 33
	AUTO DOLLAR GENERAL 122R		CM: 11
	AUTO Kyria 232K		SC: 0.5
	ROMN Tuff Euff 103T		DC: 21
Dam	GV MISS TUFF ENUFF 950W		CW: 29
	GV Miss Coach 034K		RE: 0.51
			YG: 0.02
			MS: 0.12
			\$MI: 51
BW: 88 ADJ WW: 533 ADJ YW: 898			
P.E. Dates: 05/23/13 to 07/29/2013 to GV Unbelievabull 833X.			

LOT 68 GV MISS RANSOM 006X

	PUREBRED	POLLED/DBL BLK	EPDs
	100/89.5	BD: 2/24/10	CD: 17
	LRFL006X	NPF-1966169	BW: -0.7
			WW: 43
			YW: 84
Sire	Wulfs Nasa 1212N		MA: 20
	WULFS RANSOM 3059R		CM: 9
	Wulfs Nobility 3059N		SC: 0.1
	JCL Lodestar 27L		DC: 27
Dam	GV MISS LODESTAR 801U		CW: 26
	GV Miss Wulf Hunt 661S		RE: 0.59
			YG: -0.04
			MS: 0.02
			\$MI: 44
BW: 73 ADJ WW: 501 ADJ YW: 839			
A.I. Date: 06/13/2013 to DLVL Xerox 023X.			
P.E. Dates: 06/23/13 to 07/29/2013 to GV Unbelievabull 939Y.			

BRED COWS - LOTS 61-80


LOT 69 **GV MISS ULTIMATE 004X**

	PUREBRED	DBL PLD/BLACK	EPDs
	100/90.1	BD: 2/13/10	CD: 11
	VIRG004X	NPF-1966095	BW: 2.4
			WW: 44
			YW: 75
			MA: 25
			CM: 4
			SC: 0.6
			DC: 22
			CW: 22
			RE: 0.44
			YG: -0.08
			MS: 0.10
			\$MI: 47

AUTO Dollar General 122R
 Sire **MAGS ULTIMATE**
 Mags Mandarin 425L
 Hunt Ross 42R
 Dam **GV MISS ROSS 717T**
 GV Miss Deal 540R

BW: 74 ADJ WW: 531 ADJ YW: 833
 P.E. Dates: 05/23/13 to 07/29/2013 to GV
 Unbelievabull 833X.


LOT 70 **GV MISS LODESTAR 9945W**

	PUREBRED	DBL PLD/OTHER	EPDs
	100/90.2	BD: 10/19/09	CD: 8
	LRFL9945W	NPF-1954492	BW: 3.0
			WW: 56
			YSW: 100
			MA: 22
			CM: 5
			SC: 0.8
			DC: 25
			CW: 25
			RE: 0.54
			YG: -0.03
			MS: -0.01
			\$MI: 47

JCL Lodestar 27L
 Sire **GV LODESTAR 409R**
 GV Miss Down 980J
 GPFF Blaque Rulon
 Dam **GV MISS RULON 4442P**
 GV Miss Black Aramis 674V

BW: 78 ADJ WW: 620 ADJ YW: 964
 P.E. Dates: 05/22/13 to 07/29/2013 to GV
 Unbelievabull 939Y.


LOT 71 **GV MS TUFF ENUFF 927W**

	PUREBRED	DBL PLD/BLACK	EPDs
	100/90.8	BD: 3/14/09	CD: 16
	LRFL927W	NPF-1933968	BW: 0.0
			WW: 46
			YW: 84
			MA: 23
			CEM: 8
			SC: 0.5
			DC: 18
			CW: 28
			RE: 0.54
			YG: -0.06
			MS: 0.06
			\$MI: 46

Wulfs Ransom 3059R
 Sire **ROMN TUFF ENUFF 103T**
 ROMN Roberta 35R
 DJ Gentleman In Black
 Dam **GV MISS GENTLEMAN 4410P**
 GV Miss Steakhouse 443D

BW: 81 ADJ WW: 579 ADJ YW: 835
 P.E. Dates: 05/22/13 to 07/29/2013 to GV
 Unbelievabull 939Y.


LOT 72 **GV MS \$GENERAL 914W**

	PUREBRED	POLLED/DBL BLK	EPDs
	100/91	BD: 2/23/09	CD: 14
	LRFL914W	NPF-1933939	BW: -0.1
			WW: 50
			YW: 88
			MA: 26
			CM: 12
			SC: 0.7
			DC: 18
			CW: 41
			RE: 0.39
			YG: 0.10
			MS: 0.17
			\$MI: 50

LVLS Secret Weapon 4408K
 Sire **AUTO DOLLAR GENERAL 122R**
 AUTO Kyria 232K
 JCL Lodestar 27L
 Dam **GV MISS LODESTAR 728T**
 GV Miss Beef 330F

BW: 74 ADJ WW: 565 ADJ YW: 826
 A.I. Date: 06/13/2013 to DLVL Xerox 023X.
 P.E. Dates: 06/23/13 to 07/29/2013 to GV
 Unbelievabull 833X.


LOT 73 **GV MS LODESTAR 8865U**

	PUREBRED	DBL PLD/DBL BLK	EPDs
	100/91.4	BD: 11/14/08	CD: 7
	VIRG8865U	NPF-1925666	BW: 3.1
			WW: 54
			YW: 94
			MA: 25
			CM: 6
			SC: 0.3
			DC: 9
			CW: 26
			RE: 0.35
			YG: 0.03
			MS: 0.03
			\$MI: 47

JCL Lodestar 27L
 Sire **GV LODESTAR 409R**
 GV Miss Down 980J
 Mags Little Brother
 Dam **GV MISS L BROTHER 3320N**
 GV Miss Jag 1124L

BW: 83 ADJ WW: 577 ADJ YW:
 P.E. Dates: 05/22/13 to 08/01/2013 to GV Dollar
 General 743X.

LOT 74 **GV MISS MVP 8828U**


	LIM-FLEX	DBL PLD/RED	EPDs
	75/67.5	BD: 9/23/08	CD: 9
	LRFL8828U	LFF-1925591	BW: -0.7
			WW: 40
			YW: 74
			MA: 22
			CM: 6
			SC: 0.6
			DC: 14
			CW: 33
			RE: 0.19
			YG: 0.19
			MS: 0.12
			\$MI: 45

D&M Endzone 31
 Sire **CARROUSELS MVP**
 Wulfs 4421's Girl 7015G
 Bon View New Design 878
 Dam **GV MISS NEW DESIGN 5503R**
 GV Miss Down 990J

BW: 70 ADJ WW: 465 ADJ YW: 742
 P.E. Dates: 05/21/13 to 07/29/2013 to GV X-Man 701X.


BRED COWS - LOTS 61-80

LOT 75 **GV MISS SHOP TALK 8818U**

	PUREBRED	DBL PLD/BLACK	EPDs
	100/91	BD: 9/16/08	CD: 8
	LRFL8818U	NPF-1925573	BW: 0.8
	Carrousels Pure Power		WW: 46
Sire	WULFS SHOP TALK 2332S		YW: 79
	Wulfs Myrlene 2332M		MA: 18
	GV Mr Beef 522G		CM: 2
Dam	GV MISS Beef 050K		SC: 0.8
	GV Miss 770 225B		DC: 17
			CW: 28
			RE: 0.65
			YG: -0.13
			MS: -0.01
			\$MI: 44

BW: 73 ADJ WW: 477 ADJ YW: 775
P.E. Dates: 05/22/2013 to 07/29/2013 to GV Unbelievabull 939Y.

LOT 76 **GV MISS GENERAL 854U**

	PUREBRED	DBL PLD/DBL BLK	EPDs
	100/90.2	BD: 3/29/08	CD: 12
	VIRG854U	NPF-1905079	BW: 1.4
	LVLS Secret Weapon 4408K		WW: 44
Sire	AUTO DOLLAR GENERAL 122R		YW: 88
	AUTO Kyria 232K		MA: 25
	SY Rambo		CM: 9
Dam	GV MISS RAMBO 280M		SC: 0.3
	GV Miss Beef 763G		DC: 17
			CW: 18
			RE: 0.53
			YG: -0.13
			MS: 0.07
			\$MI: 47

BW: 77 ADJ WW: 532 ADJ YW: 841
P.E. Dates: 06/05/2013 to 6/15/2013 to GV Lodestar 409R.
P.E. Dates: 06/23/13 to 07/29/2013 to GV Unbelievabull 833X.

LOT 77 **GV MISS DEAL 7731T**

	PUREBRED	HORNED/RED	EPDs
	100/94.8	BD: 9/29/07	CD: 10
	LRFL7731T	NPF-1904787	BW: 4.5
	APLF Griffey 437G		WW: 45
Sire	DEVONS THE REAL DEAL		YW: 70
	Devon Absolute		MA: 20
	GV Polled Cadet		CM: 5
Dam	GV MISS CADET 659F		SC: 0.7
	GV Miss P Bandit 450D		DC: 4
			CW: 12
			RE: 0.57
			YG: -0.19
			MS: -0.06
			\$MI: 42


BW: 84 ADJ WW: 683 ADJ YW: 864
P.E. Dates: 05/22/13 to 08/01/2013 to GV Dollar General 743X.

LOT 78 **GV MISS N. PRIZE 770T**

	PUREBRED	DBL PLD/BLACK	EPDs
	100/90.1	BD: 4/12/07	CD: 9
	VIRG770T	NPF-1891273	BW: 2.9
	Cole Wulf Hunt		WW: 40
Sire	WULFS NOBEL PRIZE 3861N		YSW: 69
	Wulf's Casual 3161C		MA: 26
	Cane Ridge Stakeout 116D		CM: 1
Dam	GV MISS STAKEOUT 607F		SC: 0.2
	GV Miss Cadet 403D		DC: 19
			CW: 19
			RE: 0.82
			YG: -0.21
			MS: -0.01
			\$MI: 43


BW: 79 ADJ WW: 529 ADJ YW: 787
P.E. Dates: 05/22/13 to 08/01/2013 to GV Dollar General 743X.

LOT 79 **GV MISS LODESTAR 760T**

	PUREBRED	DBL PLD/DBL BLK	EPDs
	100/90	BD: 4/10/07	CD: 14
	VIRG760T	NPF-1891269	BW: 0.9
	Hunts Hi-Liter 245G		WW: 50
Sire	JCL LODESTAR 27L		YW: 91
	Logan's Cheerleader 280G		MA: 17
	GV Mr. Beef 522G		CM: 8
Dam	GV MISS BEEF 310N		SC: 0.5
	GV Miss Rouser 808H		DC: 16
			CW: 28
			RE: 0.31
			YG: 0.03
			MS: 0.12
			\$MI: 49

BW: 81 ADJ WW: 596 ADJ YW: 860
P.E. Dates: 05/21/13 to 07/29/2013 to GV X-Man 701X.

LOT 80 **GV MISS LINEBACKER 710T**

	PUREBRED	POLLED/RED	EPDs
	100/92.9	BD: 2/27/07	CD: 13
	LRFL710T	NPF-1891141	BW: -0.3
	VORD Halfback		WW: 45
Sire	OKLF LINEBACKER 341L		YW: 77
	Wulf's Esther 5146 E		MA: 18
	Evening Shade 603C		CM: 1
Dam	GV MISS BLACK SHADE 634F		SC: 0.1
	GV Miss Primo 982X		DC: 7
			CW: 22
			RE: 0.76
			YG: -0.21
			MS: -0.07
			\$MI: 42

BW: 73 ADJ WW: 625 ADJ YW: 809
P.E. Dates: 05/22/13 to 08/01/2013 to GV Dollar General 743X.

2014 REFERENCE SIRES

SIRE	COLOR	H/P/S	CED	BW	WW	YW	MA	CEM	SC	DOC	CW	REA	YG	MARB	\$MTI
GV X-Man 701X	Black	DP	16	2.1	67	119	32	10	1.0	21	59	0.92	0.03	0.07	53
AUTO Dollar General 122R	HB	HP	15	0.7	64	112	45	14	0.7	19	42	0.38	0.16	0.22	56
GV Dollar General 743X	HB	HP	10	1.6	63	101	31	9	1.0	15	42	0.61	-0.01	0.07	51
GV Unbelievabull 939Y	DB	DP	9	1.8	50	93	31	4	0.8	20	31	0.67	-0.02	0.04	47
GV Unbelievabull 833X	DB	DP	10	1.6	61	96	26	6	0.6	21	45	0.83	-0.02	0.08	51
GV MVP 858X	DB	DP	5	4.1	58	102	14	5	0.6	10	30	0.24	0.09	-0.01	46
RUNL Stetson 850S	HB	HP	15	-1.8	57	108	19	15	0.9	41	40	0.62	-0.05	0.06	50
GV Lodestar 409R	DB	DP	13	1.9	60	107	26	12	0.8	14	38	0.36	0.08	0.11	51
GV Overtime 433T	Black	DP	9	0.6	40	83	21	2	1.1	20	10	0.83	-0.20	-0.04	42
ROMN Unbelievabull 141U	Black	P	12	0.5	38	81	24	4	0.8	27	23	0.93	-0.16	-0.06	41
GV Ross 308W	DB	DP	14	-0.9	36	75	24	7	0.5	30	20	0.59	-0.11	0.00	42
Wulfs Urban Cowboy 2149U	Red	P	9	1.6	49	94	17	6	0.2	33	29	0.71	-0.24	0.01	47
LH Rodemaster 338R	HB	HP	15	0.9	65	120	31	8	0.7	12	68	-0.11	0.69	0.38	58
WZRK Prime Cut 8012Y	Red	HP	7	4.0	68	127	23	8	0.2	23	72	0.92	-0.10	0.00	51
DLVL Xerox 023X	Black	HP	18	-3.5	43	80	20	4	0.7	39	41	0.70	-0.14	0.04	46
Buford Bluestem 9974 (Angus)	DB	HP	6	-4.1	55	107	37	3	NA	NA	42	-0.55	0.69	0.57	62
MF Net Return 8197 (Angus)	DB	HP	9	-2.2	52	104	38	3	NA	10	55	-0.69	0.86	0.50	57

GENERAL INFORMATION

TERMS: Terms of the sale are cash unless prior credit arrangements are established between buyer and seller. Settlements are to be made with the clerk immediately following the auction or before loading.

HEALTH: Health certificates will be available with each lot sold.

BREEDING GUARANTEE: All bulls, at the time of the sale, are guaranteed breeders. A bull is determined a breeder when he settles one or more females and/or passes a satisfactory semen test. **THESE BULLS WERE ALL SEMEN TESTED IN DECEMBER 2013.** Bulls believed to be non-breeders are returned to the seller at the buyer's expense. If they are proved to be a non-breeder, transportation expenses of the replacement, if made, will be paid by the seller. This guarantee

is a contract between the buyer and the seller. All other parties are acting as agents or representatives only.

LIABILITY: Each animal will be at the buyer's risk as soon as sold, but will be cared for by the seller for a reasonable period of time. Every precaution will be taken for the welfare of the animal sold. Neither owner nor sale managers can be responsible for any accidents, but every effort will be made to provide for the safety and comfort of those attending this sale.

INSURANCE Anyone wishing to insure their purchase will be responsible for doing so.

ANNOUNCEMENTS: Announcements made sale day will take precedence over printed material in the catalog.

*Thank You
for attending our sale!*



Limousin

LIMOUSIN SPRING SALE
Gene and Virginia Raymond
20217 NW Hwy. 31
Garnett, KS 66032

1ST CLASS
POSTAGE
PAID
Permit No. 11
Garnett, Kansas

ADDRESS SERVICE REQUESTED